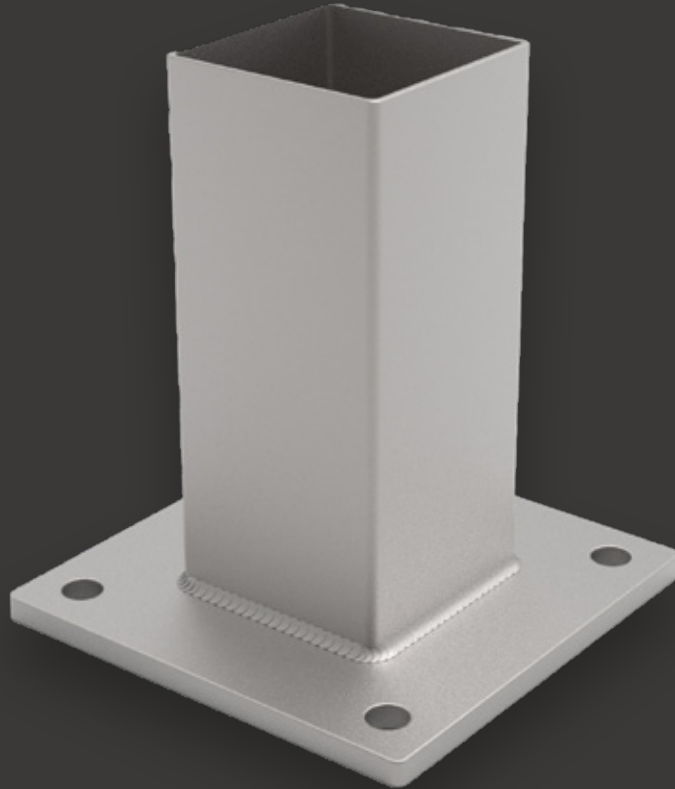




GALVANISED TOP MOUNT BASE PLATE

Profile Overview and Technical Specification



0800 CARPORTS
streamlinecarports.kiwi



GALVANISED TOP MOUNT BASE PLATE

Do you have an existing driveway or concrete pad?

Our top mount base plates are designed to allow carports to be erected securely on an already poured concrete slab.

- Minimum thickness of 100mm
- Minimum 20MPa concrete with steel reinforcing mesh
- Slab shall extend minimum of 500mm in each direction from the base plate

Product Specs

Hot dip galvanised base plate is 180mm x 180mm x 10mm mild steel plate connected to 89mm x 89mm, 5mm x 200mm high SHS with a 6mm fillet weld all around

Four 15mm holes, one in each corner for the trubolds to be drilled 20mm in from each corner to the centre of the diameter.

4/m12 Trubolts (100mm) will come with the base plate to fix in.

100x100mm 0.75 gauge posts are fitted over the base upright and are attached using 6/14gx30 long tek screws to each side of the post (total of 24 screws per post)

